

42,960 pm

ROUTE 21 BUSINESS PARK| SOVEREIGN DRIVE|
CENTURION

358 m²

ROUTE 21 BUSINESS PARK| 358 SQUARE METER
COMMERCIAL SPACE| TO LET| SOVEREIGN DRIVE|
CENTURION

This modern office space is situated within a multi-tenanted office building based in the Centurion area. This commercial unit consists out of a ground floor and first floor. It comprises out of a reception area, closed offices, a spacious open-plan work area, boardrooms, a large filing room, kitchens and communal ablution facilities. It features air conditioning, tiled flooring and windows that allow for ample natural light. This commercial unit offers storage in the ground unit. There are 8 parking bays available to tenants.

The park has twenty four hour security as well as access controlled entrance and exit points. The unit itself has been equipped with an alarm system and a private entrance gate to the office. Irene Village Mall is located just opposite of the park offering a variety of amenities. The premises is located just twenty minutes from the OR Tambo International Airport and has excellent access to the R21 freeway leading to the N1 or N14 highways as well as other main arterial roads.

Gross Rental Includes:

Gross Monthly Rental R42,960 Ex Vat
Lease Period Negotiable
Available From Immediately

Floor Size m²	358	Security	Yes
Parking Bays	-	Air Conditioning	Yes
Title	-	Generator	-
Zoning	Commercial	Fibre	Gross rental includes: -

CONTACT US

Call the Officeplace Broker

JP Jordaan

Cell No. 0636992815

Email jp@officeplace.co.za

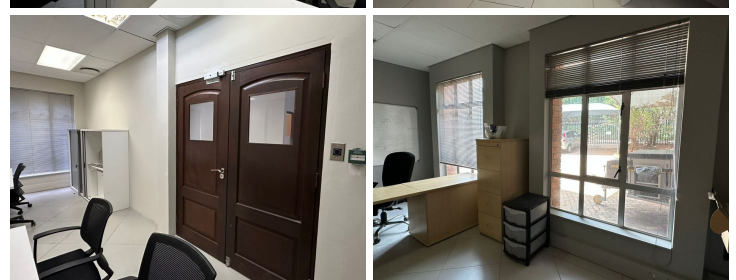
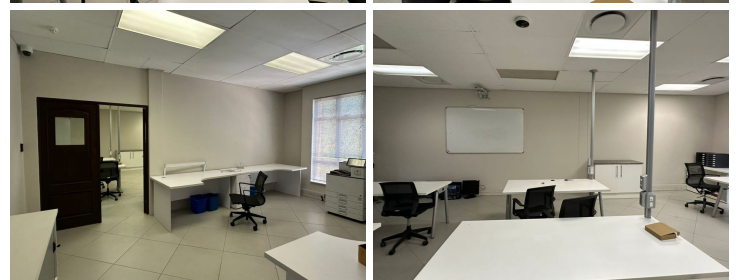
Call the Officeplace Branch

Pretoria

Office No. (012) 6440522

Email infopta@aproperty.co.za

<https://www.facebook.com/officeplace/>



Taxes - A-Grade - Reception - Office - Boardroom - Air conditioning - 24h Security - Access control - 9 Covered parking bays