

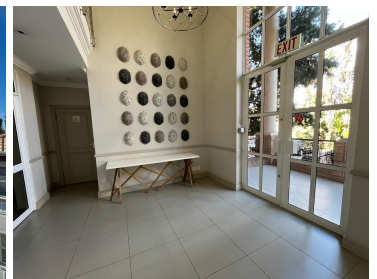
22,110 pm

31 Impala road | A grade office to let in Sandton

 **201 m²**

Immaculate office component available immediately for occupation. The office component is very neat featuring modern and upmarket finishes and brilliant natural lighting throughout with air-condition. Situated in a highly secure and stunning office park.

The building is located on the exclusive and secluded Impala road offering very easy access to Sandton CBD as well as all amenities and main arterial roads. There's various public transportation systems nearby and easily accessible.



Gross Monthly Rental R22,110 Ex Vat
Lease Period Negotiable
Available From Immediately

Floor Size m²	201	Security	Yes
Parking Bays	-	Air Conditioning	Yes
Title	Sectional Title	Generator	-
Zoning	Commercial	Fibre	-

CONTACT US

Call the Officeplace Broker
Mitch Dunn
Cell No. 066 474 9056
Email mitch@officeplace.co.za

Call the Officeplace Branch
Johannesburg
Office No. (011) 2341144
Email contact@officeplace.co.za

 <https://www.facebook.com/officeplace/>

