

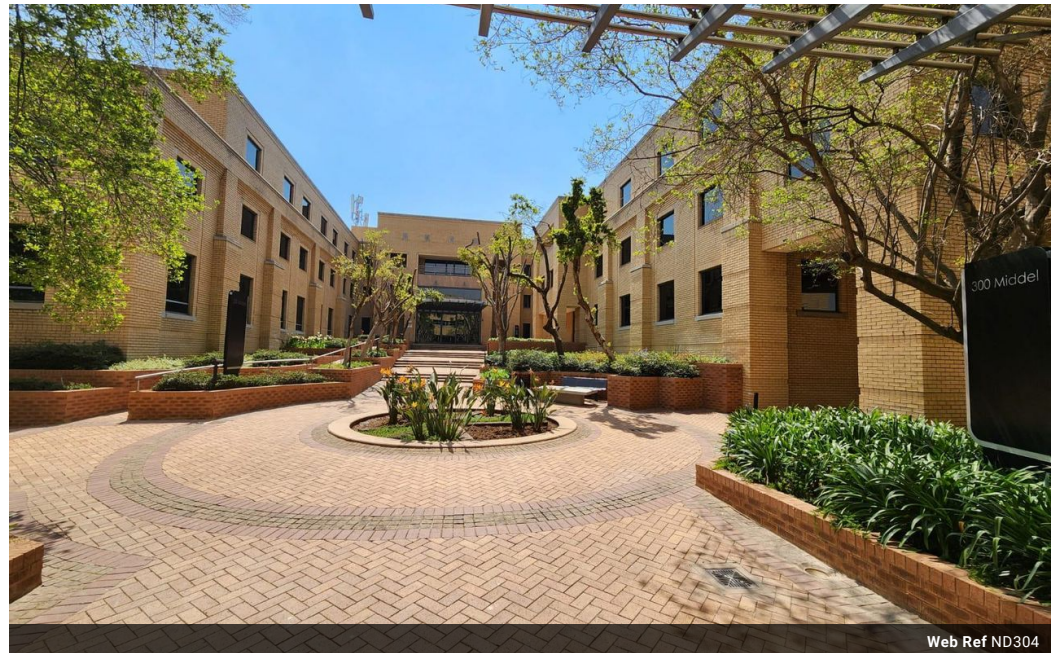


Jean Coetzer
064 755 7331
jean@officeplace.co.za

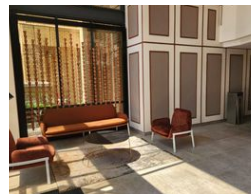
Contact Pretoria

012 6440522

Southdowns Office Park, Block D
Ground Floor, Suite 6 & 7
22 Karree Street
Irene
Centurion



Web Ref ND304



@ 300 Middle Street



Offices (10)
From R139 per m²
Size from 155m² to 11,000m²

HEAD OFFICE | MIDDLE STREET | BROOKLYN

A-GRADE OFFICE TO RENT WITH A BACK-UP POWER SUPPLY ON MIDDLE STREET, BROOKLYN

The A-Grade Office Suites are situated at 300 Middle Street based in Brooklyn, Pretoria. The building features air-conditioning and fibre connectivity for a quick and easy internet access.

The tenant will be provided with a tenant installation allowance together with a 1-month beneficial occupation period provided by the Landlord.

The property offers 24-hour security, access-controlled entrance and exit points, available parking, an elevator providing a wheel-chair friendly environment and a back-up power supply in case of any...

Features

- ✓ Walking distance to Brooklyn Bridge and Cherry Lane.
- ✓ Close to an array of restaurants and coffee shops.
- ✓ Easy access to the N1 and N4 highways.
- ✓ 24 hour security.

